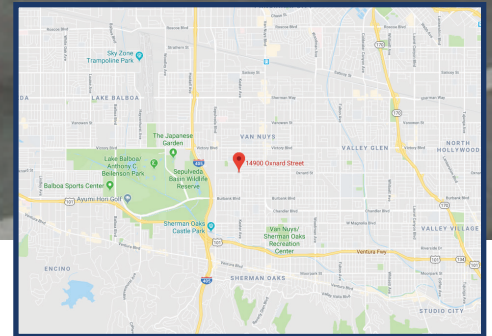
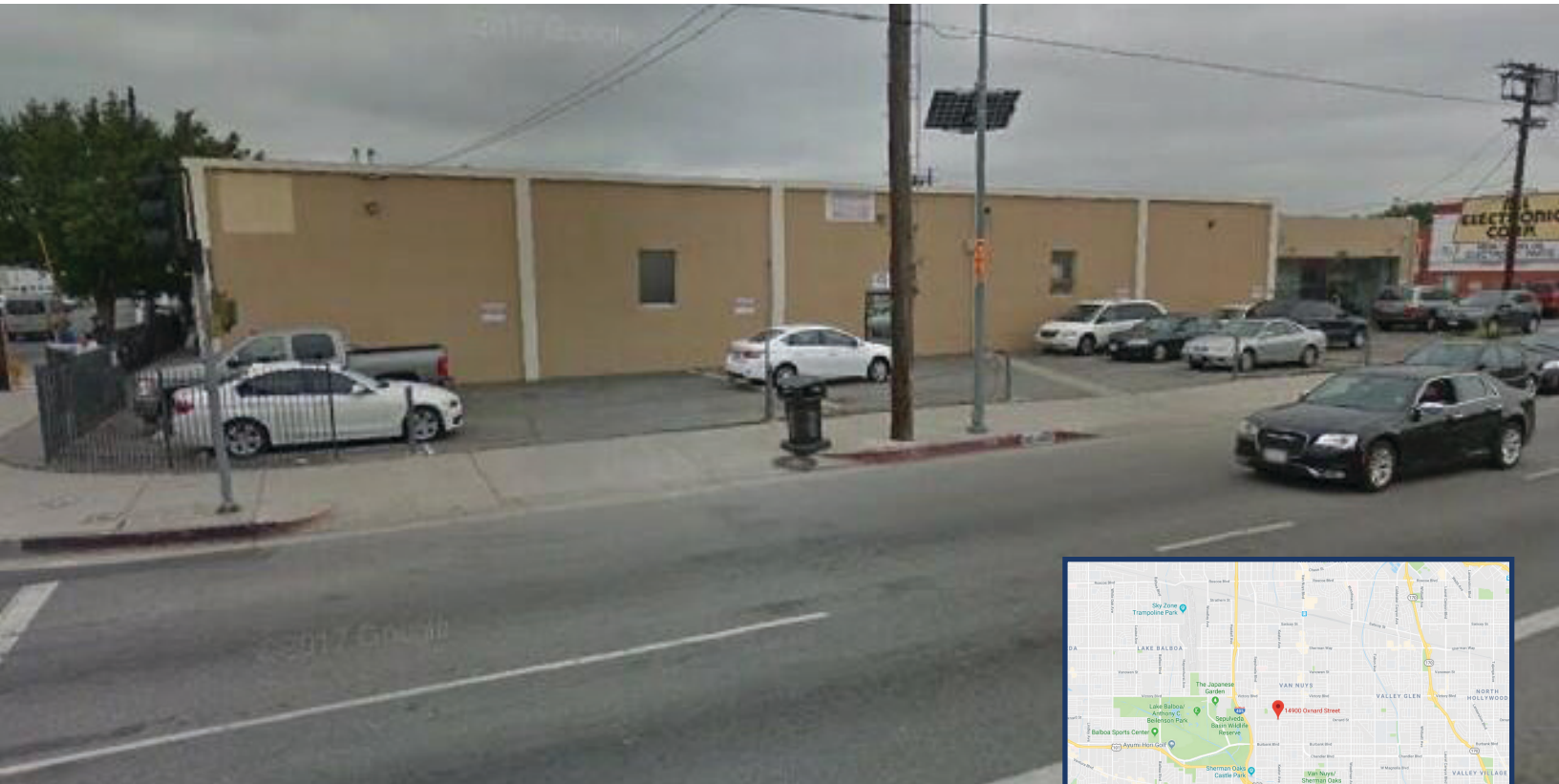


14900 OXNARD ST, VAN NUYS



10,000 SQFT
Available For Lease
\$1.35/sf MG
Available June 1, 2019

- Excellent Corner Location
- Very Clean Building
- Ideal For Wholesale Distribution or Showroom!
- Central Valley Location!

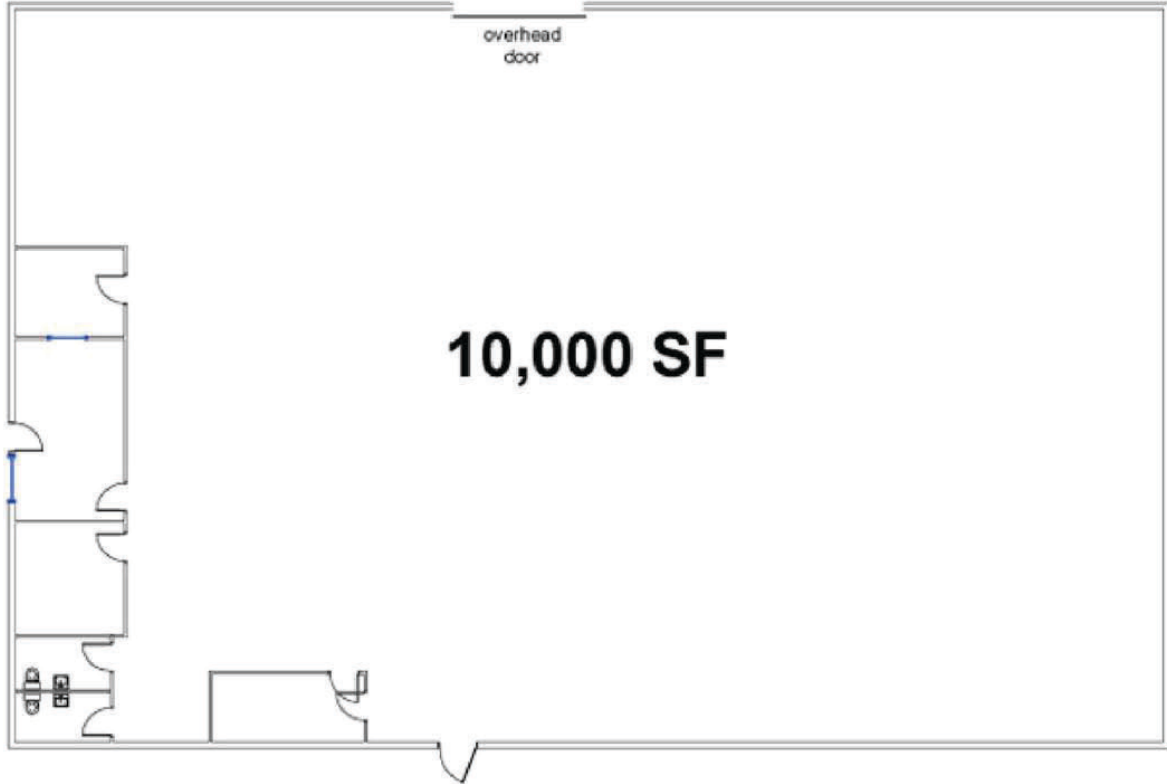


RON FEDER

Managing Director
o. 818.222.0404
f. 818.322.4015
rjf@rjfeder.com
www.rjfeder.com
Cal Lic #00983855



FEDER & ASSOCIATES
COMMERCIAL REAL ESTATE



**14900 Oxnard Street
Van Nuys, CA 91411**



RON FEDER

Managing Director

o. 818.222.0404

f. 818.322.4015

rjf@rjfeder.com

www.rjfeder.com

Cal Lic #00983855



FEDER & ASSOCIATES
COMMERCIAL REAL ESTATE